

# POLITEHNICA BUCUREȘTI

## BUCHAREST



NATIONAL UNIVERSITY OF  
SCIENCE AND TECHNOLOGY  
POLITEHNICA BUCHAREST



1818



DISCOVER YOUR PASSION  
DESIGN YOUR FUTURE



## WE BELIEVE IN PEOPLE

POLITEHNICA Bucharest was born more than two centuries ago, from the desire to assemble extraordinary people and initiate the industrial revolution of the country.

Since then, our university has been a catalyst for change, innovation and progress, transforming not only Romania, but also contributing to the development of Europe.

In those early days, a visionary group of leaders saw the potential to create a space where openness, talent and equality of opportunity would foster creativity and genuine social transformation. This vision became reality and today, it continues to be the heartbeat of our university, driving everything we do.

Our community is one of visionaries - graduates who have invented life-changing technologies, launched new industries and reshaped the world through their leadership and ingenuity. With 2 university centers, 21 faculties and nearly 40,000 students each year, we remain a regional leader in education, partnered with universities across more than 100 countries.

POLITEHNICA Bucharest is a true magnet for talent, offering a dynamic, diverse and inclusive environment where ideas and energy flow freely. Our cutting-edge research centres - CAMPUS and PRECIS - house over 70 fully equipped laboratories focused on some of the most important challenges of our time: clean energy, sustainability, artificial intelligence, robotics and much more. We deliver solutions - this is why we are connected to over 1,000 companies worldwide.



**Mihnea Costoiu**  
**Rector**

Beyond the classroom and research labs, we foster a culture of entrepreneurship, social impact and collaboration. Our student associations offer rich opportunities for both personal and professional growth, while our alumni network—one of the largest and most influential in the country - boasts a strong presence in the world's most competitive industries. We are committed to creating experiences and solutions together.

We are confident that alongside our brilliant graduates and partners, we can change the world - one step at a time. And when we believe in a brighter future, it is not necessarily faith in technology. It's faith in people.

# KEY FIGURES

2

UNIVERSITY  
CENTERS



21

FACULTIES



23

SPORT FIELDS



27

STUDENT  
ORGANIZATIONS



67

STUDY PROGRAMS  
IN FOREIGN  
LANGUAGES



159

BACHELOR'S  
DEGREE  
PROGRAMS



249

MASTER  
DEGREE  
PROGRAMS



90+

RESEARCH LABS



40K

STUDENTS



19

DOCTORAL  
SCHOOLS



3,200+

STAFF



With over 40,000 students and over 3,200 staff, POLITEHNICA Bucharest drives forward a dynamic blend of education, research, and technology transfer across disciplines ranging from engineering to sports science and arts - with a special emphasis on green research and innovative sustainable solutions.

# POLITEHNICA Bucharest: Innovation & Entrepreneurship

**+250**

PATENTS  
PORTOFOLIO

**+10**

STARTUPS  
CREATED  
(2/YEAR)

**+500 M €**

INVESTED IN  
RESEARCH IN THE  
LAST DECADE



A key strategic priority at POLITEHNICA Bucharest is bridging R&D&I and knowledge transfer with society. This vision is driven by direct partnerships with companies and specialized university centers that foster research projects and share expertise with passionate students and talented early-stage researchers—shaping the future leaders of a rapidly evolving world.

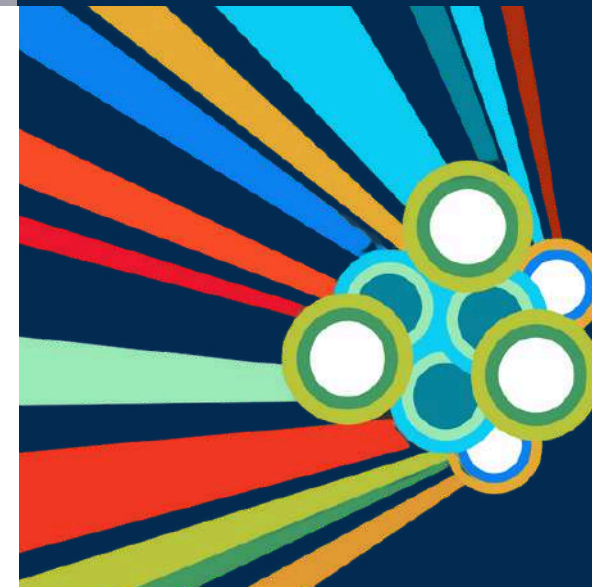
## Innovation & Entrepreneurship resources

### INNOVATION LABS

POLITEHNICA Bucharest is the initiator of the Innovation Labs, a technology pre-accelerator and national program designed to enhance entrepreneurial culture, support start-up creation, and facilitate scale-up growth for young innovators. Built on a strong partnership with Romanian universities and industry leaders, the program reached its 14th edition in 2026.

### EMPOWERING STUDENTS: INNOVATION, SUPPORT, AND KNOWLEDGE TRANSFER

The Faculty of Entrepreneurship, Business Engineering, and Management (FAIMA), in collaboration with the UPBizz Entrepreneurship Centre, supports and oversees the development and progress of student entrepreneurs while fostering an entrepreneurial spirit among students. The Innovation and Technology Transfer Office provides consultancy on intellectual property rights (IPR) and evaluates the commercial potential of research results related to IPR.





**POLITEHNICA  
BUCUREȘTI**

## OPEN RESEARCH AND DEVELOPMENT

POLITEHNICA Bucharest is developing five clusters focused on advancing the next generation of "smart" products and services, enhancing the competitiveness of Romanian enterprises to meet the challenges of the global market: Smart City Cluster – CITI, Bioengineering and E-Health Cluster, Environment and Climate Change Cluster, Digitalization and Cybersecurity Cluster, Integrated Autonomous Technology, Robotics, Automation, and Sensing Cluster – Technology Innovation Cluster.



### RESEARCH

- 46 research centers
- Institute for Advanced Research on New Materials, Products and Innovative Processes (CAMPUS) with 43 research laboratories
- Research Institute for Innovative Products, Processes and Services (PRECIS) with 28 advanced research and innovation laboratories
- 153 Laboratories, 536 services available to industry, out of which over 200 state-of-the-art Research Equipment presented in EERTIS – the International Research and Technology Infrastructures platform



### INNOVATION

- Internship agreements with over 1000 companies
- About 2,000 research projects have been implemented in the last 6 years, including around 1,200 national projects, 400 international projects, and 400 projects in partnership with industry/third parties



### PROJECT FUNDING

- Over €100 million invested in research activities over the past 6 years
- More than 150 EU-funded projects under FP7, H2020, HE, and other European programs
- Over 20 projects funded by the European Space Agency, in partnership with various European research organizations and enterprises
- 3 grants funded by the European Research Council



### DOCTORAL PROGRAMS

- Doctoral study programs in 21 fields of study

# BUCHAREST CAMPUS



Faculty of Electrical Engineering



Faculty of Energy Engineering



Faculty of Automation and Computer Science



Faculty of Electronics, Telecommunications and Information Technology



Faculty of Medical Engineering



Faculty of Mechanical Engineering and Mechatronics



Faculty of Industrial Engineering and Robotics



Faculty of Biotechnical Systems Engineering



Faculty of Transports



Faculty of Aerospace Engineering



Faculty of Material Science and Engineering



Faculty of Chemical Engineering and Biotechnology



Faculty of Engineering in Foreign Languages



Faculty of Applied Sciences



Faculty of Entrepreneurship, Business Engineering and Management

# FACULTIES

# PITESTI CAMPUS



Faculty of Science, Physical Education and Informatics



Faculty of Mechanics and Technology



Faculty of Electronics, Communications and Computers



Faculty of Education, Social Sciences and Psychology



Faculty of Economics and Law



Faculty of Theology, Philology, History and Arts



# POLITEHNICA

## Bachelor's and Master's Programmes

### in foreign languages

**21**  
BACHELOR'S  
DEGREE  
PROGRAMMES

**46**  
MASTER'S  
DEGREE  
PROGRAMMES

**32**  
DOCTORAL  
PROGRAMMES

### Undergraduate Studies

At POLITEHNICA Bucharest, studies are organized according to the Bologna process, which allows for a synchronization of the higher education systems at European level.

The engineering study programs have a duration of 4 years - 8 semesters – and finalize with 240 ECTS.

The science study programs have a duration of 3 years - 6 semesters – and finalize with 180 ECTS.

The social sciences, humanities and arts study programs have a duration of 3 years - 6 semesters – and finalize with 180 ECTS.

The law study program has a duration of 4 years – 8 semesters and finalizes with 240 ECTS.

### Master Studies

POLITEHNICA Bucharest offers numerous courses taught in English, French, and German.

The academic master studies (cycle II) are organized for a duration of 2 years - 4 semesters – and finalize with 120 ECTS.

The master of Material Science and Technology (cycle II) is organized for a duration of 1.5 years – 2 semesters – and finalizes with 90 ECTS.

The master study program in the law field (cycle II) is organized for a duration of 1 year – 2 semesters – and finalizes with 60 ECTS.



At the time of application, proof of language proficiency at level B2 must be provided by candidates for all these programmes.

The students who wish to pursue their studies in the Romanian language and don't have a language certificate could enroll in the Preparatory Year of the Romanian Language Course.



# BACHELOR'S PROGRAMMES BY FIELDS

## Bucharest Campus



### COMPUTERS AND INFORMATION TECHNOLOGY

- Information Engineering (taught in English)
- Ingénierie de l'Information (enseigné en français)
- Internet of Things Engineering (taught in English)
- Ingénierie de l'Internet des Dispositifs intelligents (enseigné en français)



### ELECTRONIC ENGINEERING, TELECOMMUNICATIONS AND INFORMATION TECHNOLOGY

- Applied Electronics (taught in English) - Faculty of Engineering in Foreign Languages
- Applied Electronics (taught in English) - Faculty of Electronics, Telecommunications and Information Technology
- Technologies and Telecommunication Systems (taught in English)
- Electronique Appliquée (enseigné en français)
- Applied Electronics /Angewandte Elektronik (taught in German)



### MECHANICAL ENGINEERING

- Mechanical Engineering (taught in English)
- Ingénierie Mécanique (enseigné en français)



### CHEMICAL ENGINEERING

- Chemical Engineering (taught in English)



### ENGINEERING AND MANAGEMENT

- Business Engineering and Management (taught in English)
- Engineering and Business Management / Ingenieurwesen und Business Management (taught in German)
- Economic Engineering in the Mechanical Field / Wirtschaftsingenieurwesen im Maschinenbau (taught in German)
- Economic Engineering in the Electrical, Electronic and Energy Field / Wirtschaftsingenieurwesen in Elektrotechnik, Elektronik und Energietechnik (taught in German)



### AEROSPACE ENGINEERING

- Air Navigation (taught in English)



### INDUSTRIAL ENGINEERING

- Integrated Engineering (taught in English)
- Applied Informatics in Industrial Engineering / Angewandte Informatik im Wirtschaftsingenieurwesen (taught in German)



### MECHATRONICS AND ROBOTICS

- Robotics (taught in English)



### ELECTRICAL ENGINEERING

- Applied Informatics in Electrical Engineering (taught in English)

# MASTER'S PROGRAMMES BY FIELDS

## Bucharest Campus



### CHEMICAL ENGINEERING

- Smart Polymers and Biopolymers (taught in English)
- Innovative Technologies for Secondary Raw Materials (taught in English)
- Advanced Materials Processing and Design (taught in English)
- Biomaterials for Tissue Engineering (taught in English)



### ELECTRICAL ENGINEERING

- Integrated Electrical Systems Engineering in Vehicles (taught in English)



### ENERGY ENGINEERING

- Energy Engineering (taught in English)
- Power Systems Monitoring and Control (taught in English)



### ELECTRONIC ENGINEERING, TELECOMMUNICATIONS AND INFORMATION TECHNOLOGY

- Advanced Microelectronics (taught in English)
- Advanced Wireless Communications (taught in English)
- Advanced Computing in Embedded Systems (taught in English)
- Electric Vehicle Propulsion and Control (taught in English)
- Intelligent Transport Systems (taught in English)



### AEROSPACE ENGINEERING

- Air Transport Engineering (taught in English)



### TRANSPORT ENGINEERING

- Transport Management (taught in English)
- Green, Smart and Integrated Transport and Logistics (taught in English)



### COMPUTERS AND INFORMATION TECHNOLOGY

- Artificial Intelligence (taught in English)
- Parallel and Distributed Computer Systems (taught in English)
- Advanced Cybersecurity (taught in English)
- Quantum Computing (taught in English)
- Financial Computing (taught in English)
- Software Engineering (taught in English)
- Information Technologies Applied in Aviation (taught in English)
- Management, Innovation et Technologies des Systèmes Collaboratifs (enseigné en français)



### SYSTEMS ENGINEERING

- Service Engineering and Management (taught in English)
- Robotics and Automation (taught in English)
- Advanced Analytics for Business (taught in English)
- Cyber Physical Systems (taught in English)



### INDUSTRIAL ENGINEERING

- Industrial Engineering (taught in English)
- Conception Intégrée des Systèmes Technologiques (enseigné en français)
- Ingénierie des Systèmes Industriels (enseigné en français)



### APPLIED ENGINEERING SCIENCES

- Smart Biomaterials and Applications (taught in English)



### ENGINEERING AND MANAGEMENT

- Business Administration and Engineering (taught in English)
- Management of the Digital Enterprises (taught in English)
- Business Engineering and Entrepreneurship (taught in English)
- Sustainable Business Excellency and Leadership / Nachhaltige Geschäftsexzellenz und Leadership in der Industrie (taught in German)
- Industrial Business Administration / Geschäfts- und Industrieverwaltung (taught in German)



### SCIENCES DE LA COMMUNICATION

- Technologies de la Traduction Automatique (enseigné en français)



### MECHATRONICS AND ROBOTICS

- Smart Biotechnical Systems (taught in English)



### MECHANICAL ENGINEERING

- Integrated Mechanical Engineering Design (taught in English)



**POLITEHNICA  
BUCUREȘTI**

# MASTER' S PROGRAMMES BY FIELDS

## Pitesti Campus



### MANAGEMENT

- Strategic Management and Business Development (taught in English)



### BUSINESS ADMINISTRATION

- Digital Transformation in Business (taught in English)



### INFORMATICS

- Advanced Techniques for Information Processing (taught in English)



### AUTOMOTIVE ENGINEERING

- Automotive Engineering for Sustainable Mobility (taught in English)



### INGÉNIERIE INDUSTRIELLE

- Science et Technologie des Matériaux (enseigné en français)



### PHILOLOGY

- Translation Study - English/French Language. Translations in an European Context (taught in English/French)



### EDUCATION SCIENCES

- Content and Language Integrated Learning for Primary and Pre-school Teachers - didactics of nonlinguistic subjects (taught in English)

# DOCTORAL AND POSTDOCTORAL STUDIES

## GENERAL INFORMATION

POLITEHNICA Bucharest runs a series of doctoral programmes whose specific objectives are to train researchers and form research teams to successfully address the challenges of new sciences, techniques and methodologies.

The doctoral schools offer a total of 32 doctoral programmes covering all the science and technology fields: electrical, mechanical, IT, chemical, industrial, materials, entrepreneurship, sport science and physical education, philology, biology etc. The duration of doctoral studies is 4 years, with the possibility of 1 year extension in well-justified cases.

POLITEHNICA Bucharest encourages and supports doctoral theses in cotutelle, and has concluded over 20 such partnerships in the last years. The cotutelle addresses both international and Romanian universities and economic partners. The admission of candidates is organised annually in two sessions: July and September.

We consider that postdoctoral fellows are an integral part of the academic community and contribute to its mission. The university offers postdoctoral fellows official status, enhances the value of their experiences, and offers services meeting their needs, and recognizes their affiliation with the university in publications, meetings and other scientific endeavors.

To initiate the process for a postdoctoral study, prospective researchers need to consult the website of the faculties to find the domains of research and mentors. Post-doc researchers benefit from a large and modern technical infrastructure in the CAMPUS and PRECIS institutes.



**CAMPUS INSTITUTE**



**PRECIS INSTITUTE**

# EXPLORE THE WORLD WITH MOBILITY OPPORTUNITIES AT POLITEHNICA BUCHAREST

At POLITEHNICA Bucharest, we are dedicated to creating exceptional mobility opportunities for students and academic staff alike.

Discover all the programs we offer on our dedicated platform: [mobility.upb.ro](https://mobility.upb.ro)

## Key Mobility Programs

**ERASMUS+**: A gateway to international academic and cultural exchange across Europe and beyond.

**DOUBLE DEGREE**: Earn degrees from both POLITEHNICA Bucharest and a partner institution, enhancing your qualifications and global employability.

**EELISA Alliance**: Join an innovative European university initiative fostering interdisciplinary collaboration and real-world impact.

**ATHENS**: Participate in short intensive courses offered by leading Europe universities.



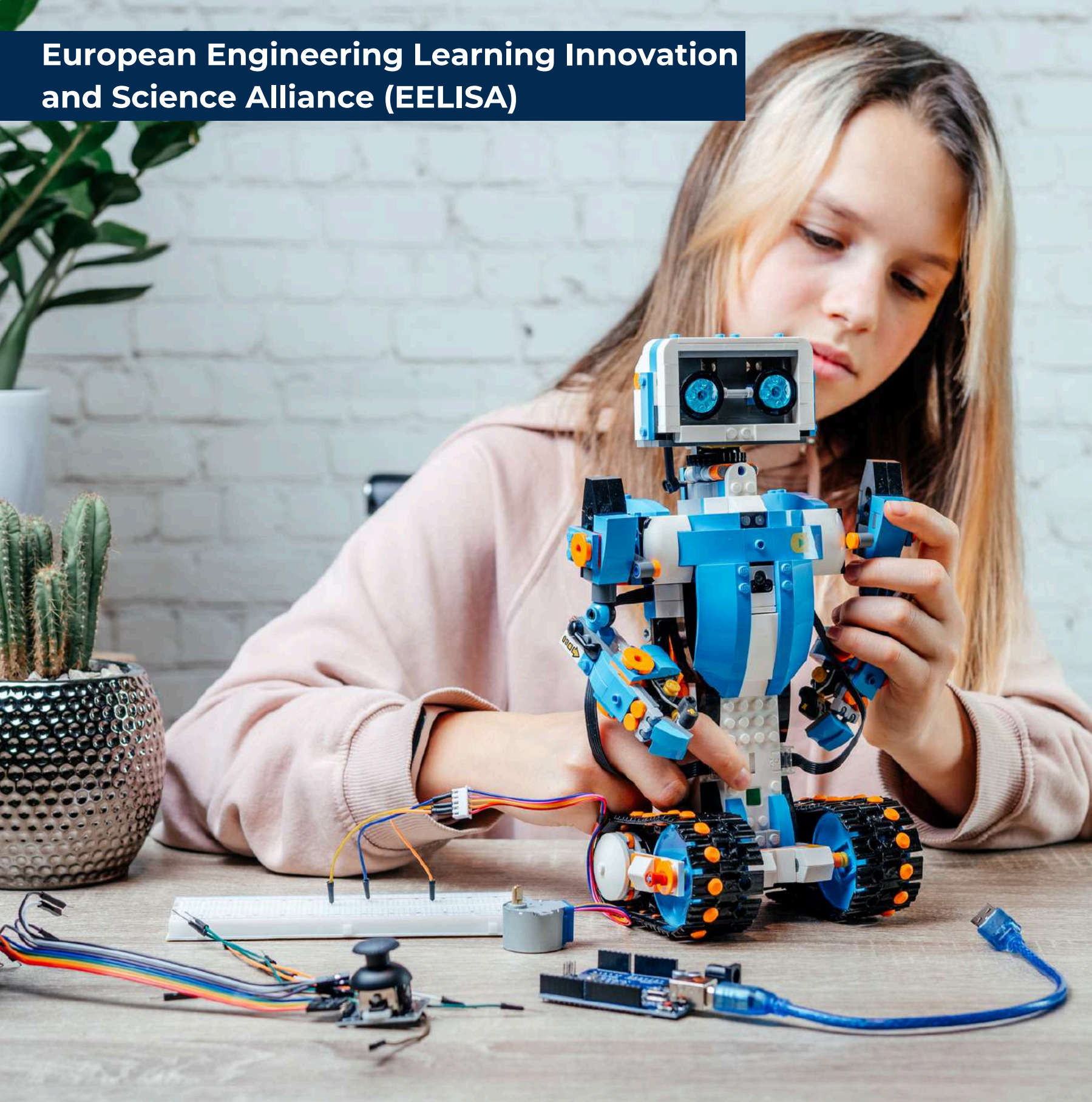
## Exclusive Opportunities for Francophones

POLITEHNICA Bucharest offers 4 distinct scholarship programs designed to support your academic journey:

- **EXCELLENCE SCHOLARSHIP**
- **EUGEN IONESCU SCHOLARSHIP**
- **PETRACHE POENARU SCHOLARSHIP**
- **GEORGE DARIE SCHOLARSHIP**



# European Engineering Learning Innovation and Science Alliance (EELISA)



## About EELISA

POLITEHNICA Bucharest is a member of EELISA (European Engineering Learning Innovation and Science Alliance), a consortium of 10 higher education institutions (graduate engineering schools, technical and full-spectrum universities) from 8 different countries in Europe with the common ambition of defining and implementing a common model of engineer rooted in society and of bridging engineering, sciences, and humanities for inclusive, sustainable and digital societies.

## Mission

The ambition of EELISA is to develop a common European engineer profile rooted in society, with increased inclusiveness, cross-disciplinarity and commitment. Such a profile includes high-level technical and scientific core competencies but also encompasses environmental, social and multicultural skills taking benefits from the European context of diversity and mobility, in order to address the new challenges of a global society (namely the green and digital transition) and the expectations of companies.



## Communities

The EELISA communities are mission-driven working groups that bring together students, teachers, and researchers from all partner universities with prestigious professionals, grassroots organizations, citizens, private companies, and public institutions to find innovative solutions to real-world challenges.



**FIND OUT MORE AND JOIN  
OUR EELISA COMMUNITIES**

**EELISA**  
European University



ALLIANCE MEMBERS



IN ASSOCIATION WITH

# ADMISSION PROCESS



## EU Students

Students from EU countries must have their study documents recognized and validated by the Romanian National Centre for the Recognition and Validation of Diplomas.

After receiving the Certificate for the Recognition of studies, the candidates will be able to enroll.

## Non-EU Students

The registration process takes place online. To register and find out all the necessary information, you need to scan the QR Code below.



Apply  
EU Students



Apply  
Non-EU Students

## Tuition Fees

### BUCHAREST CAMPUS

#### Tuition fee

- Bachelor - **€2600/Academic year**
- Master - **€2700/Academic year**
- PhD - **€3800/Academic year**

### PITESTI CAMPUS

- **€2,200 / academic year** for economics, philological, law, and socio-humanistic study programmes
- **€4,200 / academic year** for music and visual arts study programs
- **€7,500 / academic year** for the theatre and performing arts study programmes
- The tuition fees for technology, sciences, mathematics, and applied mathematics match those of the Bucharest Campus (**€2,600 / €2,700 / €3,800**).

## Romanian Language Preparatory Year

The registration process takes place online. To register and find out all the necessary information, you need to scan the QR Code below.

This program gives the international students the opportunity to learn Romanian language and explore the richness of the Romanian culture and civilization.

The Romanian language course intends to get you acquainted to various elements of specialized language, depending on the profile chosen (technical, economics, philological, judicial, medical), and getting used to the correct use of certain structures specific to specialized language, and increasing linguistic competence and performance.

#### Tuition fees:

- **€2,430** for students enrolled in technical, sciences, mathematics, and applied mathematics programmes
- **€1,980** for students enrolled in economics, philological, law, and socio-humanistic study programmes
- **€3,780** for students enrolled in music and visual arts study programmes
- **€6,750** for students enrolled in theatre and performing arts study programmes



Recognition and  
Validation of Diplomas



Apply EU Students  
Bucharest Campus



Apply EU Students  
Pitesti Campus



## STUDENT LIFE

### FACILITIES



- **13,700 accommodation places**, distributed in 2 campuses
- **7 restaurants**, operating during the entire academic year
- Internships, workshops, scientific communication sessions
- Career guidance

### COMMUNITY



POLITEHNICA Bucharest organises lots of fun activities to make our students feel welcome and get acquainted to the Romanian vibrant way of life. Being active in a student association is perhaps the best and easiest way to gain experience in the areas you are interested in. POLITEHNICA Bucharest has 27 student organizations. Time as a student is the period when a young person's life develops various colours. Centre de Réussite Universitaire under the high patronage of AUF provides a whole range of activities for students.

### SPORTS AND WELLNESS



Play, stay fit and be healthy! We offer a unique opportunity for students to participate in sport tournaments and special events. Our campus facilities are: gym, football field (natural grass), football, tennis, volleyball, handball, basketball fields (synthetic surface) and Fitness center.

### LIBRARY



The POLITEHNICA Bucharest Library offers variety of books and academic journals. It holds important collections for research and teaching in the humanities, law, medicine science, technology, and social sciences.

We offer:

- more than 1.600.000 titles
- A Digital Library, Bibliographies and an Online Catalogue
- Access to the European Documentation Centre
- Mobile access to Scientific Databases via E-nformation



### HEALTH



Medical assistance is provided free of charge for:

- Emergency first aid
- Free consultations
- Medical investigations (laboratory)
- Therapeutic indications (prescriptions)
- Medical referral letters

The students from the EU countries, who benefit from Erasmus mobility grants or non-EU students, have the insurance conditions stipulated in the application study documents.

# CONTACT US

## Follow us:

 @internationalUPB  
@InternationalRelations.UPIT

 @upb1818  
@politehnica\_international  
@official\_upit

 linkedin.com/company/unstpb-  
international-relations-department

 @Official\_Upit

 youtube.com/@upb1818

## BUCHAREST CAMPUS

Department of International Relations

 Splaiul Independentei 313  
060042 Bucharest, Romania



- upb.ro
- international.upb.ro
- mfr.upb.ro/
- apply.upb.ro
- mobility.upb.ro

 • international@upb.ro  
• internationalstudents@upb.ro



+40 214 029 872

## PITEȘTI CAMPUS

Department of International Relations

 Str. Targu din Vale 1  
110040, Pitesti, Romania



- upit.ro
- international.upit.ro
- apply.upb.ro
- mobility.upb.ro

 • internationalstudents@upit.ro



+40 348 453 108

1818